



## LED RETROFIT KIT INSTALLATION INSTRUCTIONS

These instructions apply to the retrofit kit models listed in the table below. Prior to installation, please read the entire installation instructions.



**DANGER** - Risk of Electric shock. Disconnect power to the luminaire at the source before installation.

**WARNING** - Risk of Fire or electric shock. LED Retrofit Kit installation requires knowledge of luminaires electrical systems. If not qualified, do not attempt installation. Installation should be performed by a qualified electrician in accordance with the National Electrical Code and relevant local code.

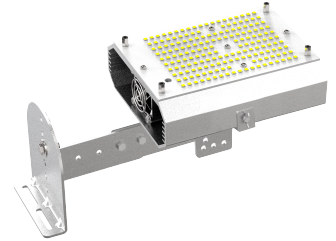
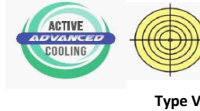
**WARNING** - Risk of fire or electrical shock. Install this kit only in the luminaires that have the construction features and dimensions shown in the photographs and/or drawings and where the input rating does not exceed the input rating of the luminaire.

**WARNING** - To prevent wiring damage or abrasion, do not expose wiring to edges of sheet metal or other sharp objects.

**CAUTION** - If the lamp or luminaire exhibits undesirable operation, immediately turn off the power, remove the lamp and contact the manufacturer.

**This device is not intended for use with Emergency Exits**

Suitable for use in damp locations. Do not use where exposed to water.  
 Suitable for use in enclosed fixtures.



## INSTALLATION REQUIREMENTS

Model	Voltage	Environment	Acceptable Fixtures	Recommended Minimum Compartment Dims.		
				Length	Width	Height
LED-8150-50K	120-277VAC	Suitable for damp locations	Enclosed fixtures. Open fixtures (indoors only)	11.0"	6.0"	4.0"
LED-8280-50K	120-277VAC	Suitable for damp locations	Enclosed fixtures. Open fixtures (indoors only)	13.0"	10.0"	5.0"

### CONTENTS

1 pc LED retrofit head
1 pc LED driver
1 pc mounting bracket with L-bracket
2 pcs flat plates
Screws and nuts
Installation instructions

### INSTALLATION NOTES

- The LED Head is shipped with a temporary plastic cover which must be removed prior to operating the light.
- The external Driver will also need to be installed. Please review the entire instructions prior to installation. It may be better to install the driver prior to installing the brackets or LED head.
- This product is only meant to be installed by qualified personnel. Do not attempt to install if not qualified.
- Do not install this retrofit kit where it may come into contact with water.
- There are two mounting options for this retrofit kit. Please review both options prior to installation.
- This is a non-dimmable retrofit kit. Do not attempt to dim the system or install with a dimmer.

## INSTALLATION INSTRUCTIONS

### Pre-Installation

- 1.) Make sure that the power is off before installation and that it can not be inadvertently re-energized during installation.
- 2.) Remove bulb, reflector, ballast and socket from the fixture. The reflector must be permanently removed.  
**WARRANTY IS VOID IF THE FIXTURE'S REFLECTOR IS NOT REMOVED**
- 3.) Clean the inside of the fixture. If necessary, clean the fixture's glass.
- 4.) Review instructions and decide which method of installation is best suited for the application.

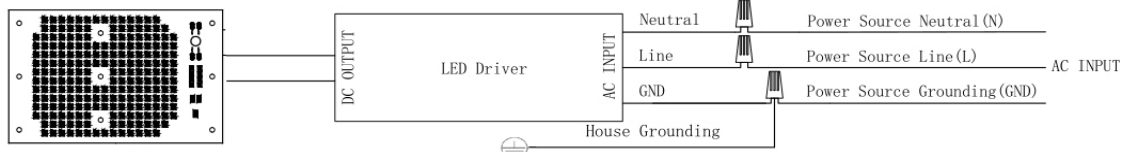
See page 2 for "L-Bracket" mounting

See page 3 for "Flat Plate" mounting. This method is generally used for vertical mounting.

See below for Driver installation

### Driver Installation

- 1.) Install the driver in place of the ballast. Ensure that the driver is not placed near the hot air outlet of the heat sink.
- 2.) Wire the input source to the LED driver. The inputs are marked ACN (Neutral), ACL (Line) and there is a ground wire.  
 It is very important to have a proper ground.
- 3.) Connect the output wires of the driver to the input wires of the LED head. The Red wire of the driver output must be connected to the Red wire of the LED head, and the Black wire of the driver output must be connected to the Black wire of the LED Head.  
**Note: the wiring in step 3 is polarity sensitive. If it not connected correctly, the LED head will not work.**
- 4.) Ensure that the wires are secured to avoid contact with the fans. If necessary, re-assemble the remaining parts of the



**Installation option: Mounting by “L bracket”:**

1. Mount the pre-assembled bracket (see FIG.1) to fixture (see FIG.2 for an example).



FIG.1

Use at least 2 screws

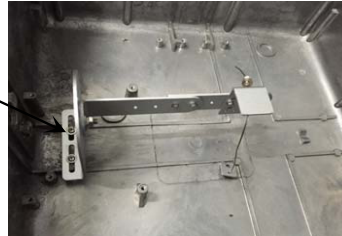


FIG.2

2. There is a mounting port on the top of the LED head. Insert the port to the bracket, and then attach the metal cord (already with one end attached to the bracket) to the LED head, by fixing it to a screw hole on the side of the LED head, using a butterfly screw (provided). **If the metal cord is not tight, adjust the length of it and make sure it's tight, such that the LED head is firmly locked with the bracket.** The butterfly screw can be used without tool (see FIG 3).

Firstly, insert the port to the bracket.

Secondly, attach this metal cord (one end already fixed on the bracket) to the LED head, by fixing it in a screw hole on the side of the LED head, using a butterfly screw (provided).

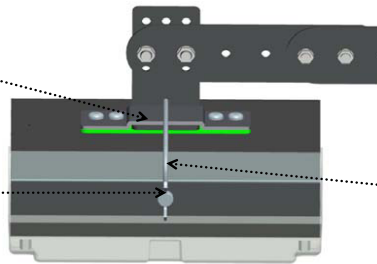


FIG.3

Thirdly, if the metal cord is not tight, adjust the length, and **MAKE SURE THE CORD IS TIGHT!**

See FIG 4 & FIG 5 for examples.

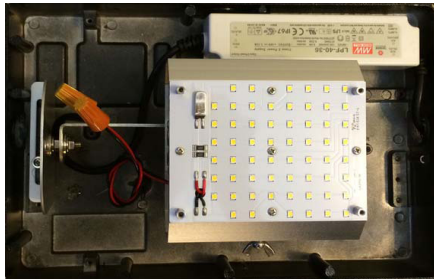


FIG. 4 (Wall pack example)

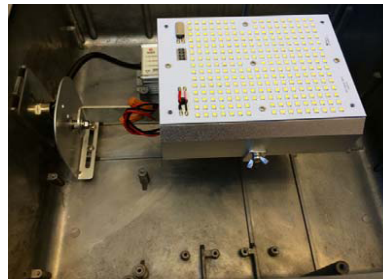


FIG. 5 (shoebox example)

3. Secure the metal cord (already with one end attached to the LED head) to the fixture, for secure purpose. See FIG.6.

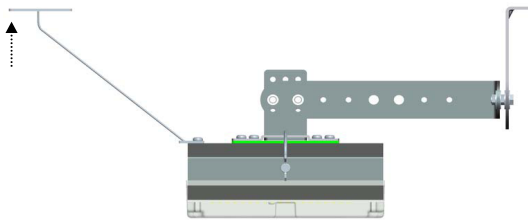
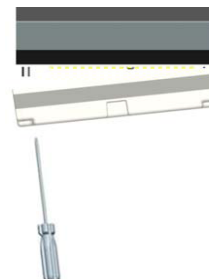


FIG.6

4. Remove the PC protective cover on the LED head (see FIG. 7). The PC cover is only meant to protect the LEDs during shipment and installation. It has to be removed after installation.

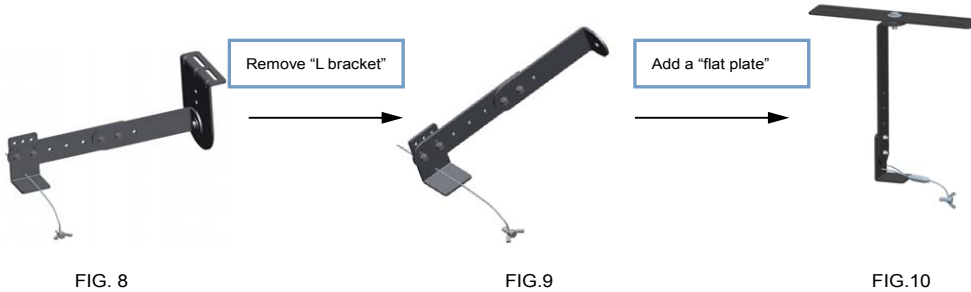
5. BE SURE THAT NOTHING WILL TOUCH OR FALL INTO THE FAN BLADES AFTER THE FIXTURE IS MOUNTED.



**Installation option: Mounting by "Flat mounting plate":**

(This option is mostly used as a vertical mounting way):

1. To use this option, replace the pre-assembled "L bracket" with a "flat plate" (See FIG.8, FIG.9, FIG.10)



2. Mount the bracket with flat plate to fixture (See FIG.11 for an example).

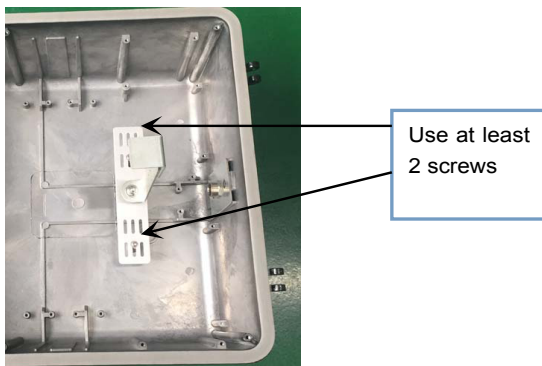


FIG.11

3. There is a mounting port on the top of the LED head. Insert the port to the bracket, and then attach the metal cord (already with one end attached to the bracket) to the LED head, by fixing it to a screw hole on the side of the LED head, using a butterfly screw (provided).

**If the metal cord is not tight, adjust the length of it and make sure it's tight, such that the LED head is firmly locked with the bracket.** The butterfly screw can be used without tool (see FIG 12).

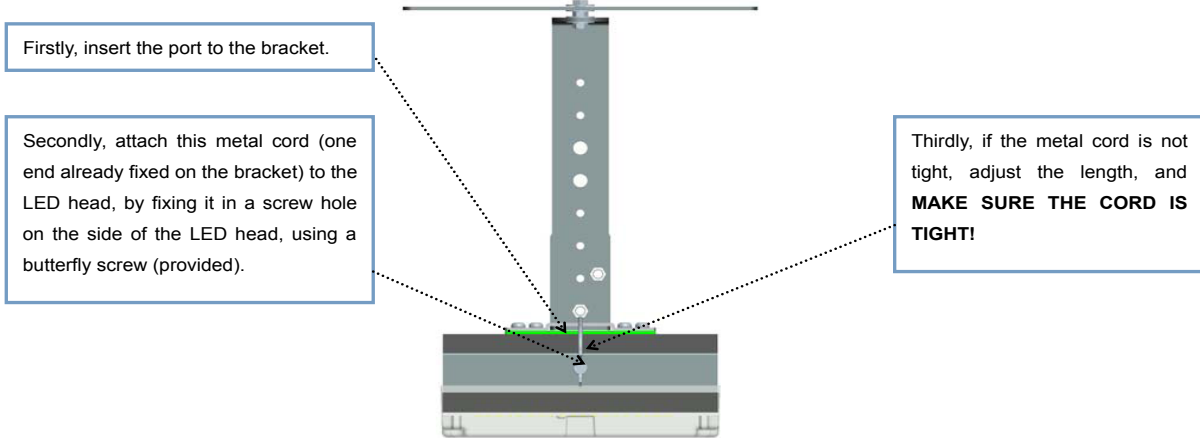


FIG. 12

4. Secure the metal cord(s) (already with one end attached the LED head, see FIG. 6) to the fixture, for secure purpose.
5. Remove the PC protective cover on the LED head (Refer to FIG. 7). The PC cover is only meant to protect the LEDs during shipment and installation. It has to be removed after installation.
6. BE SURE THAT NOTHING WILL TOUCH OR FALL INTO THE FAN BLADES AFTER THE FIXTURE IS MOUNTED.